

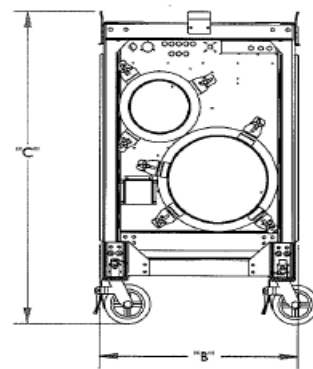
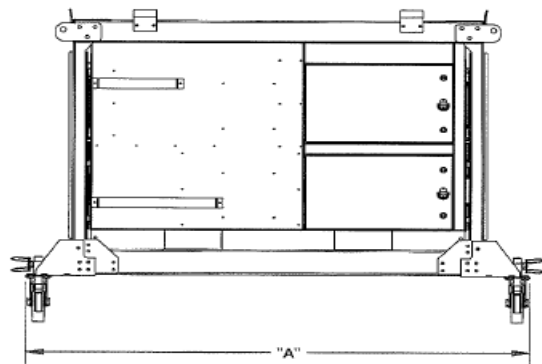


Climate by Design International

2100 Park Drive • Owatonna, MN 55060 • 507.451.2198
 Fax: 507.451.1177 • sales@cdihvac.com • www.cdihvac.com

MS-2400/2000 Mobile-Dry Units

<u>Model</u>	<u>CFM</u>	<u>Fuel Type</u>	<u>"A" Dim.</u>	<u>"B" Dim.</u>	<u>"C" Dim.</u>	<u>Weight</u>
CDH-R-126-2.0-E	2400/2000*	Electric	89"	29"	58"	1150 lbs
CDH-R-126-2.0-G	2400/2000*	Gas	89"	29"	58"	1150 lbs



<u>Model</u>	<u>Moisture Removal Lbs/Hr</u>	<u>Moisture Removal Gallons/Day</u>	<u>Moisture Removal Lbs/Hr</u>	<u>Moisture Removal Gallons/Day</u>	<u>Moisture Removal Lbs/Hr</u>	<u>Moisture Removal Gallons/Day</u>
	80°/60% RH	80°/60% RH	55°/80% RH	55°/80% RH	40°/80% RH	40°/80% RH
CDH-R-126-2.0-E	59	170	51	146	34	126
CDH-R-126-2.0-G	59	170	51	146	34	126

<u>Model</u>	<u>Pipe Size</u>	<u>LP Inlet Pressure</u>	<u>Natural Gas Inlet Pressure</u>	<u>Electric Reactivation Load</u>	<u>Electric Reactivation FLA Load</u>	<u>Gas Reactivation FLA Load</u>	<u>Gas Reactivation FLA Load</u>	<u>CFH Gas Max Usage NG</u>	<u>Gallon/HR Max Usage LP</u>
				230/1/60	460/3/60	460/3/60	575/3/60		
Electric	N/A	N/A	N/A	N/A	60	N/A	50	N/A	N/A
Gas	1/2"	7-14" w.c.	7-14" w.c.	30	N/A	15	15	120	1.8

Available Accessories:

- (2) Swivel Locking and (2) Fixed Castors
- Lifting and stacking cage
- Remote Humidistat
- Trailer Mounting
- 18" or 20" Round Supply Connections



*Weights and Dimensions subject to change without notice

**2" External Static Pressure

Revised 12/23/2020